

STANDARD DEPARTURE
CHART - INSTRUMENT
(SID) - ICAO

TRANSITION ALTITUDE
10000 FT

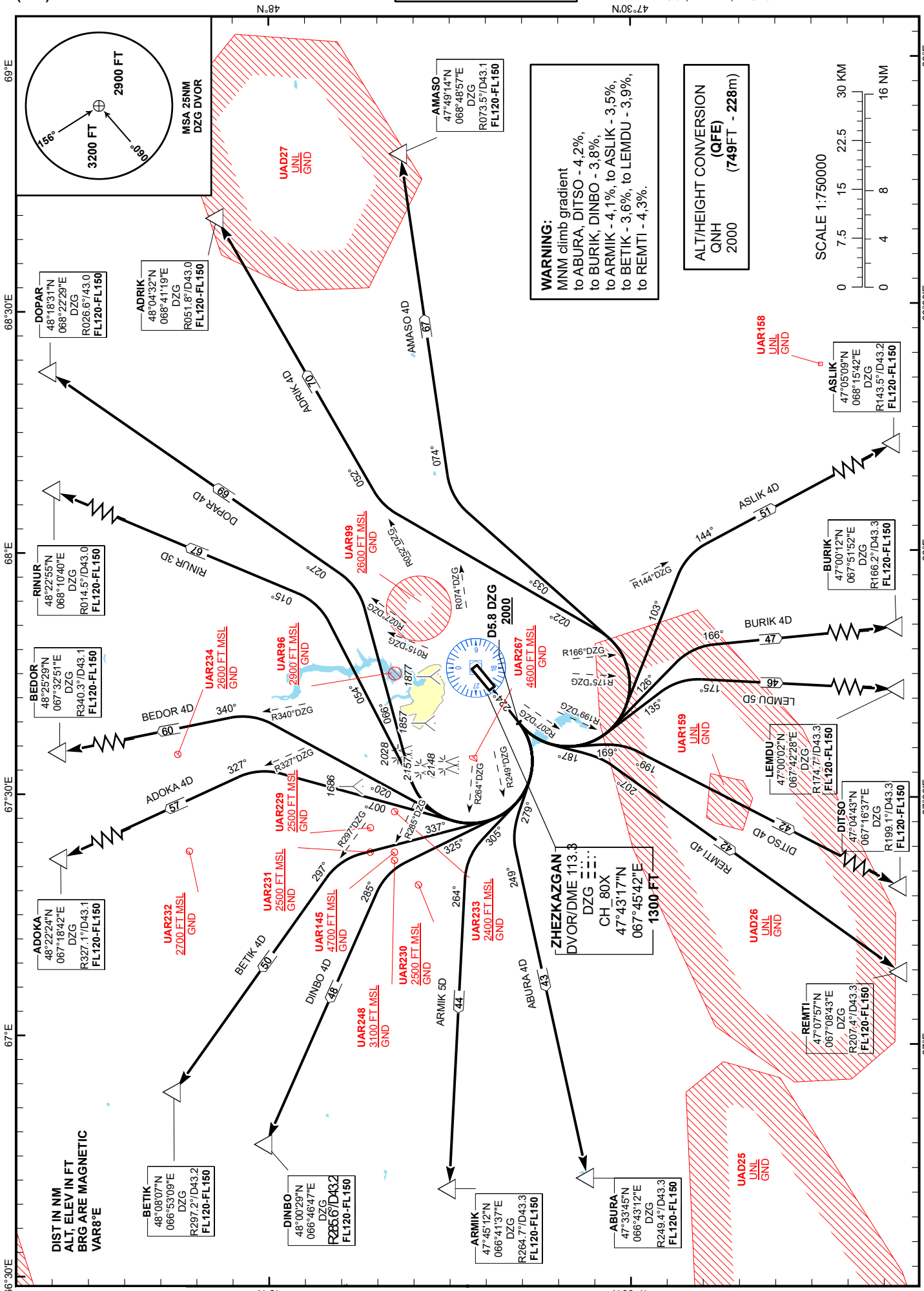
ZHEZKAZGAN TOWER 127.1
ZHEZKAZGAN ATIS (EN) 131.4
ZHEZKAZGAN ATIS (RU) 122.4

ABURA 4D, ADOKA 4D, ADRIK 4D,
AMASO 4D, ARMIK 5D, ASLIK 4D,
BEDOR 4D, BETIK 4D, BURIK 4D,
DINBO 4D, DITSO 4D, DOPAR 4D,
LEMDU 5D, REMTI 4D, RINUR 3D.

ZHEZKAZGAN
RWY 22

CHANGE: MSA, obstacles, add ATIS.

DIST IN NM
ALT, ELEV IN FT
BRG ARE MAGNETIC
VAR 8°E



STANDARD DEPARTURE ROUTES – INSTRUMENT (SID) ZHEZKAZGAN RWY 22	
RINUR 3D After take-off climb straight ahead to 2000 or above. At 5.8NM DZG, turn RIGHT on track 054° until intercept R015°DZG, then proceed on track 015° to RINUR (R014.5° D43.0NM DZG). Cross RINUR at FL120 - FL150.	REMTI 4D After take-off climb straight ahead to 2000 or above. At 5.8NM DZG, turn LEFT on track 187° until intercept R207°DZG, then proceed on track 207° to REMTI (R207.4° D43.3NM DZG). Cross REMTI at FL120 - FL150.
DOPAR 4D After take-off climb straight ahead to 2000 or above. At 5.8NM DZG, turn RIGHT on track 066° until intercept R027°DZG, then proceed on track 027° to DOPAR (R026.6° D43.0NM DZG). Cross DOPAR at FL120 - FL150.	ABURA 4D After take-off climb straight ahead to 2000 or above. At 5.8NM DZG, turn RIGHT on track 279° until intercept R249°DZG, then proceed on track 249° to ABURA (R249.4° D43.3NM DZG). Cross ABURA at FL120 - FL150.
ADRIK 4D After take-off climb straight ahead to 2000 or above. At 5.8NM DZG, turn LEFT on track 022° until intercept R052°DZG, then proceed on track 052° to ADRIK (R051.8° D43.0NM DZG). Cross ADRIK at FL120 - FL150.	ARMIK 5D After take-off climb straight ahead to 2000 or above. At 5.8NM DZG, turn RIGHT on track 305° until intercept R264°DZG, then proceed on track 264° to ARMIK (R264.7° D43.3NM DZG). Cross ARMIK at FL120 - FL150.
AMASO 4D After take-off climb straight ahead to 2000 or above. At 5.8NM DZG, turn LEFT on track 033° until intercept R074°DZG, then proceed on track 074° to AMASO (R073.5° D43.1NM DZG). Cross AMASO at FL120 - FL150.	DINBO 4D After take-off climb straight ahead to 2000 or above. At 5.8NM DZG, turn RIGHT on track 325° until intercept R285°DZG, then proceed on track 285° to DINBO (R285.6° D43.2NM DZG). Cross DINBO at FL120 - FL150.
ASLIK 4D After take-off climb straight ahead to 2000 or above. At 5.8NM DZG, turn LEFT on track 103° until intercept R144°DZG, then proceed on track 144° to ASLIK (R143.5° D43.2NM DZG). Cross ASLIK at FL120 - FL150.	BETIK 4D After take-off climb straight ahead to 2000 or above. At 5.8NM DZG, turn RIGHT on track 337° until intercept R297°DZG, then proceed on track 297° to BETIK (R297.2° D43.2NM DZG). Cross BETIK at FL120 - FL150.
BURIK 4D After take-off climb straight ahead to 2000 or above. At 5.8NM DZG, turn LEFT on track 126° until intercept R166°DZG, then proceed on track 166° to BURIK (R166.2° D43.3NM DZG). Cross BURIK at FL120 - FL150.	ADOKA 4D After take-off climb straight ahead to 2000 or above. At 5.8NM DZG, turn RIGHT on track 007° until intercept R327°DZG, then proceed on track 327° to ADOKA (R327.1° D43.1NM DZG). Cross ADOKA at FL120 - FL150.
LEMDU 5D After take-off climb straight ahead to 2000 or above. At 5.8NM DZG, turn LEFT on track 135° until intercept R175°DZG, then proceed on track 175° to LEMDU (R174.7° D43.3NM DZG). Cross LEMDU at FL120 - FL150.	BEDOR 4D After take-off climb straight ahead to 2000 or above. At 5.8NM DZG, turn RIGHT on track 020° until intercept R340°DZG, then proceed on track 340° to BEDOR (R340.3° D43.1NM DZG). Cross BEDOR at FL120 - FL150.
DITSO 4D After take-off climb straight ahead to 2000 or above. At 5.8NM DZG, turn LEFT on track 169° until intercept R199°DZG, then proceed on track 199° to DITSO (R199.1° D43.3NM DZG). Cross DITSO at FL120 - FL150.	